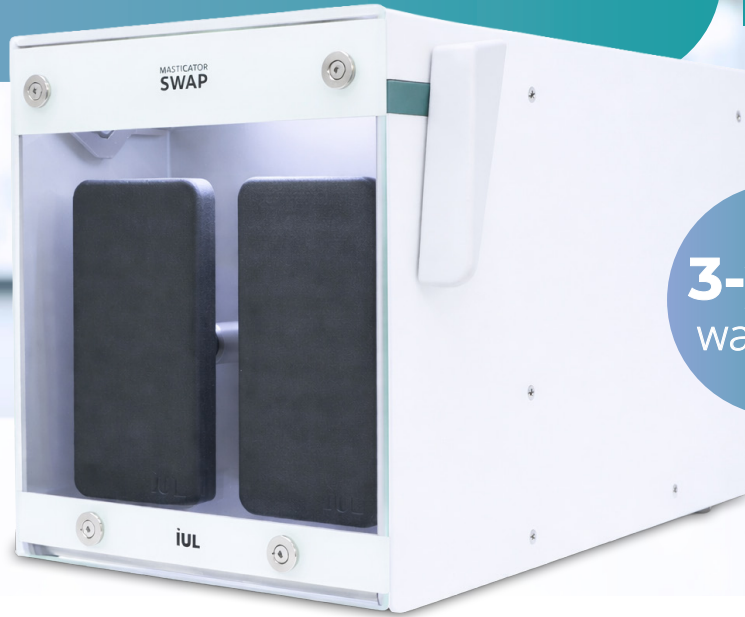


MASTICATOR

Paddle Blender

iUL



3-year warranty

Allows compliance with:



ISO 7218

Product description

The Masticator paddle blender provides **reliable, high-efficiency homogenization** for microbiological quality control testing. This step is essential as it produces a **consistent** and **representative sample** that supports confident, dependable colony quantification.

The paddles impact the sample inside a 400 mL sterile bag, breaking down and dispersing the sample without introducing shear stress. This **preserves microorganism viability** and supports accurate downstream enumeration. Designed for durability and easy operation, the Masticator delivers steady, repeatable performance suited to demanding daily laboratory workflows.



Robust construction

Long-lasting spring system for intensive daily use



Comfort-first design

Easy operation and effortless cleaning



Easy parameter control

Adjustable time and strokes per second*



Real-time process visibility

Luminous warning & viewing window available*

* Only available in select models

Seamlessly integrated into your microbiology workflow

1 Place sample bag



2 Set parameters



3 Lock front door to start



4 Remove sample bag



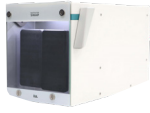



Dilute with ease and precision using the **Smart Dilutor W**



Automate sample plating with the **Eddy Jet 2W**

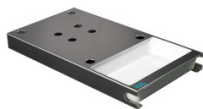


Designed around your needs

| Models | SWAP | Classic / Classic Panoramic* | Basic / Basic Panoramic* | Silver / Silver Panoramic* |
|-------------------------------------|---|---|---|---|
| |  |  |  |  |
| 220 / 240 V 100 / 127 V | Cat. 9000300 Cat. 9000301 | Cat. 9000400 / 500 Cat. 9000401 / 501 | Cat. 9000470 / 475 Cat. 9000471 / 477 | Cat. 9000420 / 520 Cat. 9000421 / 521 |
| Strokes per second | 8.5 (50 Hz) 10 (60 Hz) | 8.5 (50 Hz) 10 (60 Hz) | 8.5 (50 Hz) 10 (60 Hz) | 5 / 6 / 7 / 8 |
| Timer (seconds) | 15 / 30 / 60 / ∞ | 15 / 30 / 60 / 90 / ∞ | 15 / 30 / 60 / 90 / ∞ | 15 / 30 / 60 / 90 / 120 / 150 / 180 / 210 / 240 / ∞ |
| Luminous warning | During and after homogenization | - | - | - |
| Material (paddles and door) | Paddles: Polyamide Door: glass | Stainless steel | Stainless steel | Stainless steel |
| Material (inner chamber) | Steel | Stainless steel | Steel | Stainless steel |
| Operator interface | Time setting button | Time setting knob | Time setting knob | Time setting button and digital display |
| Certifications | CE Marked; Allows compliance with ISO 7218 (Operation time) | | | |
| Equipment dimensions (L×W×H) | | 41.0 × 26.0 × 24.0 cm / 16.1 × 10.2 × 9.4 in | | |
| Net weight | 14.5 kg / 32.0 lb | 16.5 kg / 36.4 lb | 20.0 kg / 44.1 lb | 16.5 kg / 36.4 lb |
| Package dimensions (L×W×H) | | 60.0 × 42.0 × 40.0 cm / 23.7 × 16.6 × 15.8 in | | |
| Gross weight | 16.5 kg / 36.4 lb | 18.5 kg / 40.8 lb | 22.0 kg / 48.5 lb | 18.5 kg / 40.8 lb |

*Panoramic versions differ only from the Classic, Basic and Silver ones by having a transparent glass door
Specifications subject to change without notice

Accessories



Stand & tray
Cat. 9000742



Tray
Cat. 9000743



Stainless steel holder for 6 bags
Cat. 90002300



Slim paddles*
Cat. 900014325
*Masticator SWAP

IUL, SA

Barcelona, Spain
+34 932 740 232
sales@iul-inst.com
www.iul-instruments.com

IUL Inc.

Alexandria, VA, USA
+1 (571) 237-0188
sales@iul-instruments.us
www.iul-instruments.us

IUL GmbH

Leonberg, Germany
+49 (0) 7152 6150 998
service.de@iul-inst.com
www.iul-instruments.com



For more information
about **Masticator**,
scan the QR code

